

# RAIL VEHICLES

---

Windscreens, windows, doors,  
wipers, headlights, interiors.

---



**BOHAMET®**

RAIL

*Love challenges*

---

## RAIL BOHAMET Sp. z o. o

---

Rail - Bohamet rapidly growing company in the group Bohamet producing windows and glazing for rail vehicles and public transport. The offer is complemented door, windscreen wipers, aluminum structures vehicle equipment, steel structures railway architecture, service. The company operates under obtained certificates and quality management systems. We are interested in continuous development and implementation of innovative solutions to meet customer needs. Our big advantage: we are the producer of the Glass as well as the steel products what give us a short production and delivery time of complete product. Advanced and modern machine park ensures high production capacity and independence of cooperation. In 2017 we delivered a side and curved windows and interior fittings to more than 50 rail vehicles. We love new challenges.

---

# TABLE OF CONTENTS

---

WINDSCREEN GLASS	04
DRIVER CAB AND REAR WINDOW GLASS	04
FIXED WINDOW	05
SLIDING WINDOW	05
TILTING WINDOW	06
DOORS AND GLASS WALLS	06
REFLECTOR GLASS	07
DESKTOP RACK	07
PANTOGRAPH WIPERS	08
STEEL RAILWAY ARCHITECTURE GLAZED	09
TYPES OF OFFERED GLASS	10
OTHER SERVICES	11
CERTIFICATES	11

# WINDSCREEN GLASS



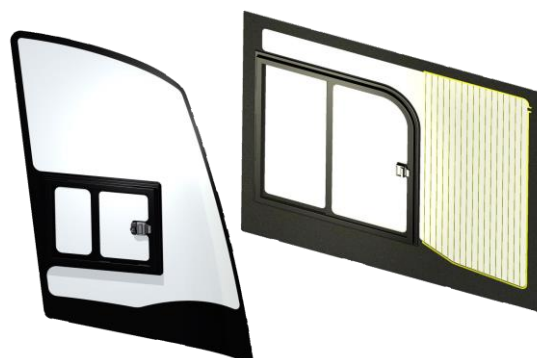
## CHARACTERISTICS

Front laminated safety glass with the approval of the ECR 43, UIC 651, PN-EN 15152 to transport vehicles: trains, buses, trams, etc.

The window with display and electric heating function.

Glass painting	ceramic paint sieveprint		without print
Glass type	flat	laminated	curved
Bonding	acc. to DIN 6701-2		
Electroheated glass	24V, 400V acc. to projects demands		
Display	12V		

# DRIVER CAB AND REAR WINDOW GLASS



*Type1: with sliding window*

*Type2 : only glass without sliding window*

## CHARACTERISTICS

Driver cab and rear laminated safety glass with the approval of the ECR 43 to transport vehicles: buses, trams, trolleybuses, etc.

The window with display and electroheated function.

Frame material	aluminum EN-AW 6060 T66			
Frame painting	powder RAL		anodizing	
Handle version	the lock on the square 8mm		without lock	
Glass painting	ceramic paint – sieveprint		without print	
Glass type	laminated	electroheated	flat	curved
Bonding	acc. to DIN 6701-2			
Welding	acc. to DIN 15085-2			
Glass protection	antiscratch, antigraffiti foil			
Seal	acc. to EN45545-2			
Opening direction	right		left	
Drainage system	in the glass			

# FIXED WINDOW

Type1: glued glass

Type2: glued frame with sealed glass

## CHARACTERISTICS

Fixed window with safety glass with the approval of the ECR 43, UIC 564-1, UIC 560 to transport vehicles: trains, buses, trams, trolleybuses, etc.

The window with display function –  
electroheated glass 24V.



Frame material	aluminum EN-AW 6060 T66		
Frame painting	powder RAL	anodizing	
Glass painting	ceramic paint – sieveprint	without print	
Glass type	tempered	laminated	insulated
Bonding	acc. to DIN 6701-2		
Welding	acc. to DIN 15085-2		
Glass protection	antiscratch, antigraffiti foil		
Seal	acc. to EN45545-2		
Maintenance	from inside/outside		

# SLIDING WINDOW

Type1: frame glued on the glass

Type2 : frame glued with the glass transversely

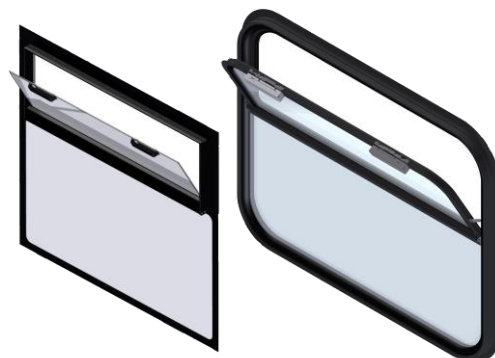
## CHARACTERISTICS

Sliding window horizontally composed of safety glass with the approval of the ECR 43 to transport vehicles: trains, buses, trams, trolleybuses, etc;



Frame material	aluminum EN-AW 6060 T66		
Frame painting	powder RAL	anodizing	
Handle version	the lock on the square 8mm	without lock	
Glass painting	ceramic paint – sieveprint	without print	
Glass type	tempered	laminated	insulated
Bonding	acc. to DIN 6701-2		
Welding	acc. to DIN 15085-2		
Glass protection	antiscratch, antigraffiti foil		
Seal	acc. to EN45545-2		
Opening direction	right	left	
Drainage system	type 1 in the glass	type 2 in the frame	

# TILTING WINDOW



Type1: tilting frame glued with bottom glass

Type2: tilting window in one frame

## CHARACTERISTICS

Tilting window with opening angle of 35 degrees, safety glass with the approval of the ECR 43 to transport vehicles: trains, buses, trams, trolleybuses, etc.

Frame material	aluminum EN-AW 6060 T66		
Frame painting	powder RAL	anodizing	
Handle version	the lock on the square 8mm	without lock	
Glass painting	ceramic paint – sieveprint	without print	
Glass type	tempered	laminated	insulated
Bonding	acc. to DIN 6701-2		
Welding	acc. to DIN 15085-2		
Glass protection	antiscratch, antigraffiti foil		
Seal	acc. to EN45545-2		
Opening directions	inside		
Drainage system	in the frame		
Maintenance	from inside/outside		

# DOORS AND GLASS WALLS



Type1: glass doors

Type2: aluminum sliding and hinged type doors

Type3: heavy steel doors for locomotive

## CHARACTERISTICS

Glass, aluminum and steel doors. Sliding and hinged type with laminated safety glass. ECR approval for transport vehicles: trains, buses, trams, trolleybuses, ect.

Frame material	aluminum EN-AW 6060 T66		
Frame painting	powder RAL	anodizing	
Handle version	the lock on the square 8mm	without lock	
Glass painting	ceramic paint – sieveprint	without print	
Glass type	tempered	laminated	
Bonding	acc. to DIN 6701-2		
Welding	acc. to DIN 15085-2		
Glass protection	antiscratch, antigraffiti foil		
Seal	acc. to EN45545-2		
Opening directions	right	left	automatic
Door leaf	single	double	

# REFLECTOR GLASS



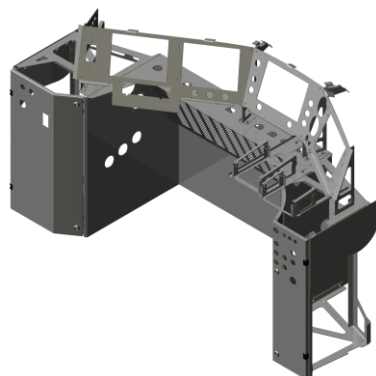
## CHARACTERISTICS

Reflector safety glass with the approval of the ECR 43 to transport rail vehicles;

The window with electroheated function.

Glass painting	ceramic paint – sieveprint		
Glass type	laminated	flat	curved
Bonding	acc. to z DIN 6701-2		
Electroheated glass	24V		

# DESKTOP RACK



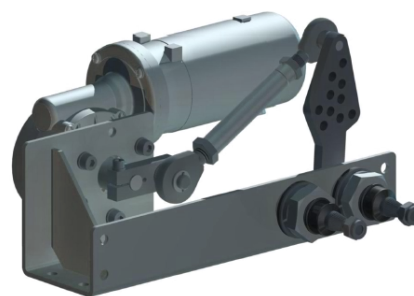
## CHARACTERISTICS

Aluminum constructions – desktop rack equipped with inspection covers and doors with square locks 8mm for rail vehicles.

We offer also laminated covers for desktop rack.

Frame material	aluminum plate EN-AW 5754	
Frame painting	powder RAL	wet system
Lock type	square lock 8mm	without lock
Bonding	acc. to DIN 6701-2	
Welding	acc. to z DIN 15085-2	

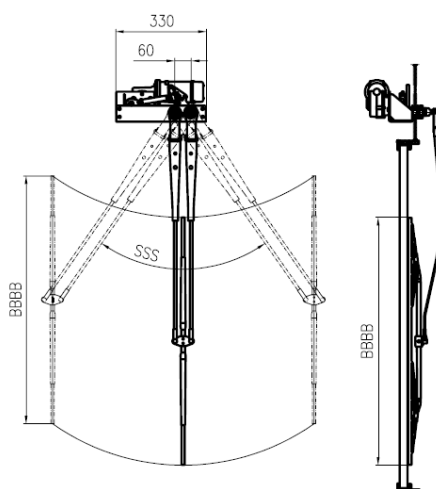
# PANTOGRAPH WIPERS



## CHARACTERISTICS

Wipers are characterized by high durability and long life service. Designed for heavy-duty applications. Equipped with 24 or 230 VDC engine.

Operating range (dimension SSS)	from 31,0° to 93,4°
Arm's length (dimension AAAA)	from 400mm to 1200mm
Blades length (dimension BBBB)	from 350mm to 1600mm
Material	stainless steel



## ADDITIONAL COMPONENTS

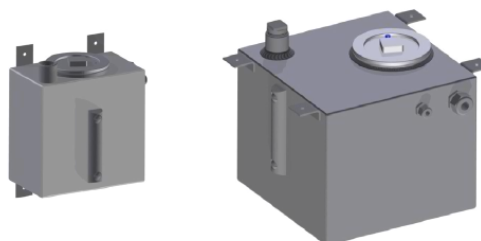
### WCP – wipers control panels

Operates with 1 to 6 wipers. On/Off, two speeds.  
Power supply 24 VDC.



### Water tanks

Capacity from 10 l to 100 l. Equipped with 12 VDC water pump and non return valve. Can be connected to fresh water ship supply by the 1 inch pipe.





---

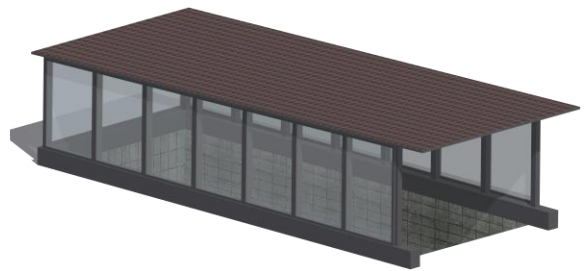
# STEEL RAILWAY ARCHITECTURE GLAZED

---

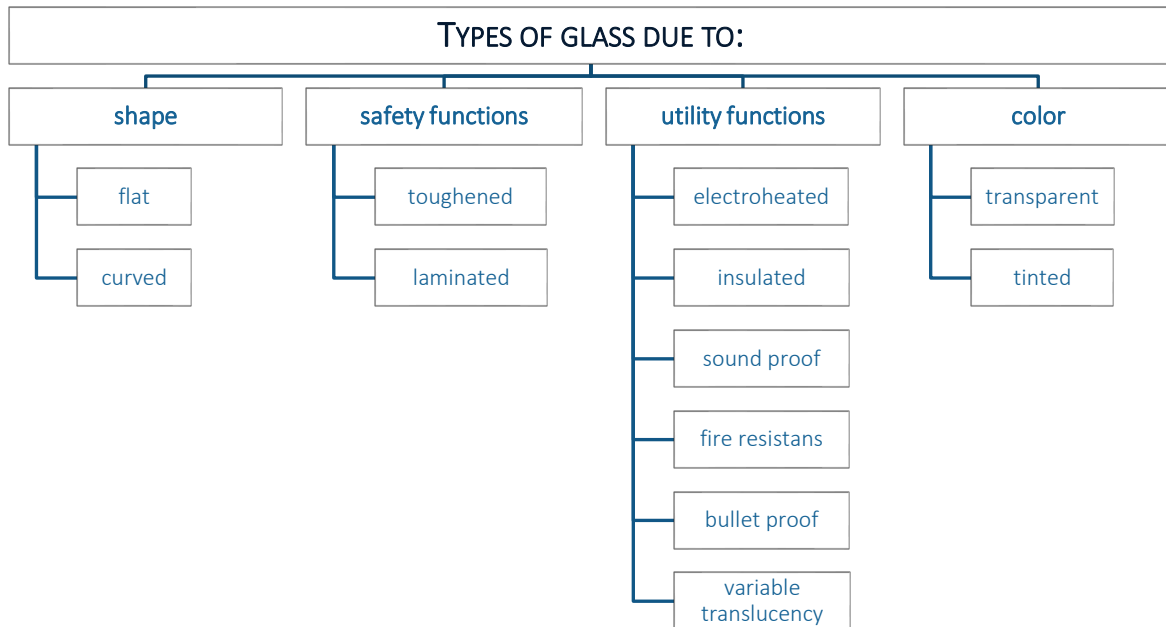
## CHARACTERISTICS

Small architecture - steel structures with safety glazing: the design, manufacture full range.

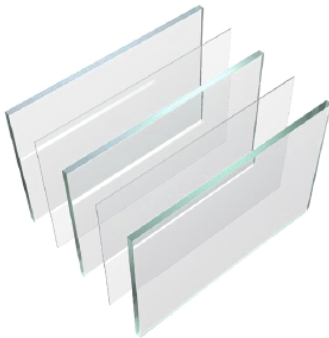
Glazing objects such as railway stations, bus shelters.



# TYPES OF OFFERED GLASS



ARMEX – bullet resistant glass



PRIVA CONTROL – variable translucency glass



Electroheated glass



BOHFLAM – fire resistant glass



---

## OTHER SERVICES

---

- Unusual implementations of bent glass
- Bonding service
- Interval renovations
- Window renovation



---

## CERTIFICATES

---

43R approval granted.

Certificate Class A1 acc. to DIN 6701-2.

Certificate CL1 acc. to EN 15085-2.

Quality Management System IRIS.

Quality Management System ISO 9001.

Certificate of conformity CZ IK acc. to UIC 566.



---

# CONTACT

---

Please contact us for further details.

**Headquarters:**

tel.: +48 52 32 03 925

e-mail: [bohametrail@gmail.com](mailto:bohametrail@gmail.com)

**Sale Department:**

mobile: +48 602 631 569

email: [tomasz.maroszek@rail-bohamet.pl](mailto:tomasz.maroszek@rail-bohamet.pl)

web: [www.rail-bohamet.pl](http://www.rail-bohamet.pl)

RAIL-BOHAMED Sp. z o. o.

Ciele, ul. Toruńska 2, 86-005 Białe Błota  
POLAND

---

